

Overview

Sales Support

SL1000

Release x

Doc. Version 1.00

The SL1000

Smart Communication for Small Businesses



www.nec-unified.com



Why choose the SL1000



Value for Money

- Powerful communications with a small business price tag
- Only pay for what you need, with an entirely scalable solution
- Lower running costs by making smarter use of your communications



Easy to use

- Intuitive features that can be used, without the need for training
- Handsets and apps include shortcuts that speed up working processes
- Time-saving apps empower your team to become more productive



Lean and Green

- Energy efficiency mode, contributing to a healthier environment
- Built-in conferencing for a greener approach to business meetings
- A range of home working options to help lower fuel emissions



Keep them connected

- Use your mobile to stay contactable on your office number
- DECT wireless communication for maximum reachability
- Never miss a thing, with enhanced voicemail to keep you up to date

SL1000: What is it ?

A Unique communication platform which is the ideal solution for any small business. (sweet spot: 8 – 30 users)

The SL1100 makes your team more reachable, more responsive and more productive by using:

■ Cost Effective communication

- VoIP
- TDM
- DECT

■ Application suites

- MyCalls, Desktop Suite, PMS Lite (tbd)

■ Embedded applications –

- LCR, Hotel, Mobility, VoiceMail, UM

Embedded, Free Features

Answering Machine

- VRS\Automated Attendant (1channel, 4 message prompts) *
- Voice Mail function. (1 channel, 10 VoiceMail Msg, total 8 min.) *

Mobility

- Integrate your GSM with the SL1000 and make use of the PBX functions
- 4 Mobile Extension ports for free *

Conferencing

- 32 Conference Seats (2 pools of 16 circuits)

Room Monitoring

Connect your MP3 Player for Music On Hold or Commercials

And Much more

* Boundaries can be increased with additional hardware and/or licenses .
See relevant Presentation

KSU Design



375(W) x 290(H) x 115(D) mm

- Combination of matt and glossy finish creating a sharp image
- Wall mountable or rack mountable (on a shelf)

Terminal Design



High quality look and feel

- Flat / slim line design
- Pearl white face, creating a contrast with the black keys

Multiple Language support: Simply change the Desi label

Navigation key allows for an improved user interface

Ecology

Low Power Consumption

App 25% less than Topaz / DSX



LCD Dimming

Dim 50% during idle condition
(12TXH-B / 24TXH-B Terminals)

Power Saving Mode

Automatically off the power
(Stand-by mode) during Night
Mode

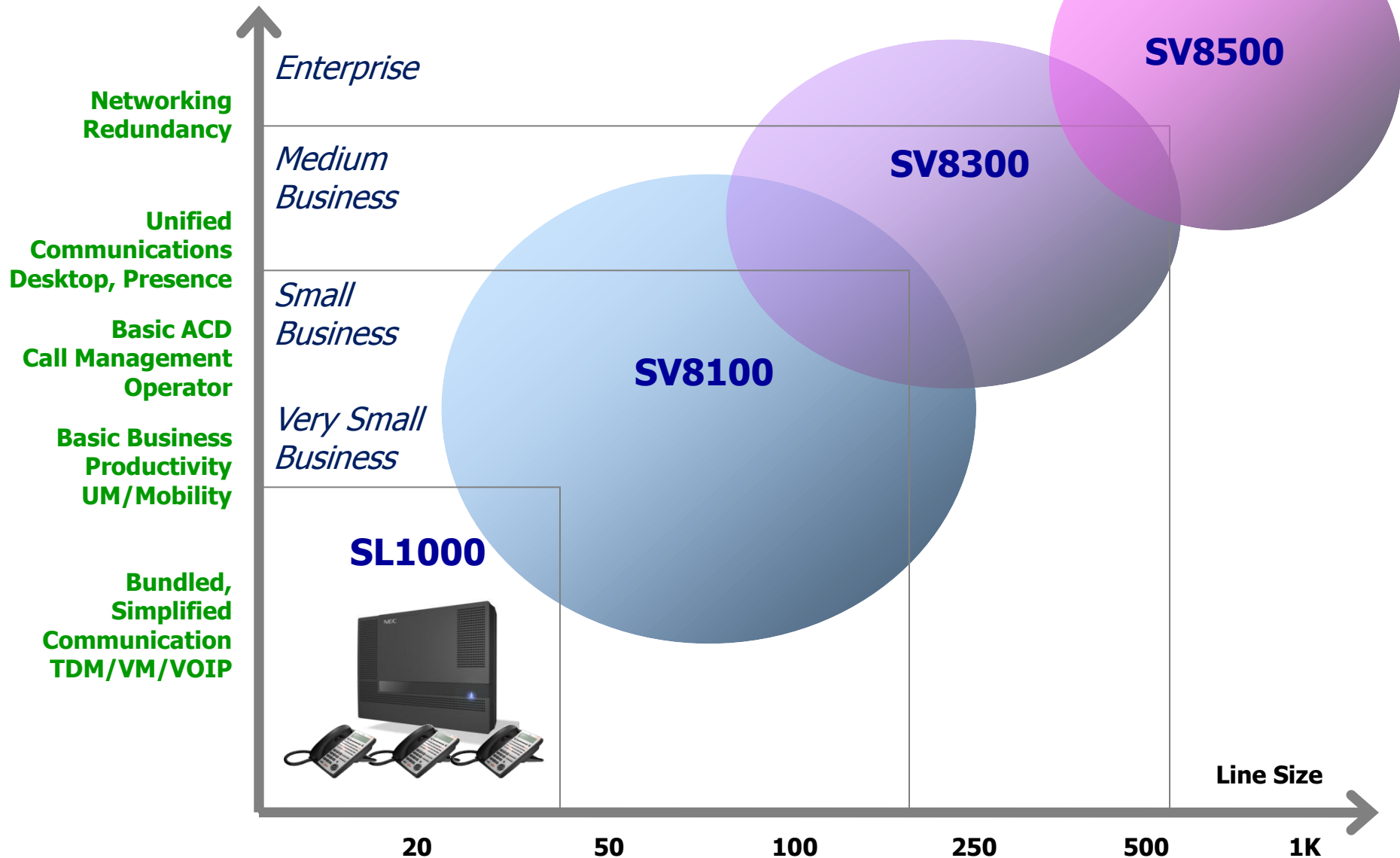


28 APR MON 8:45AM			
200	EXT200		
List	Dir	ICM	Prog

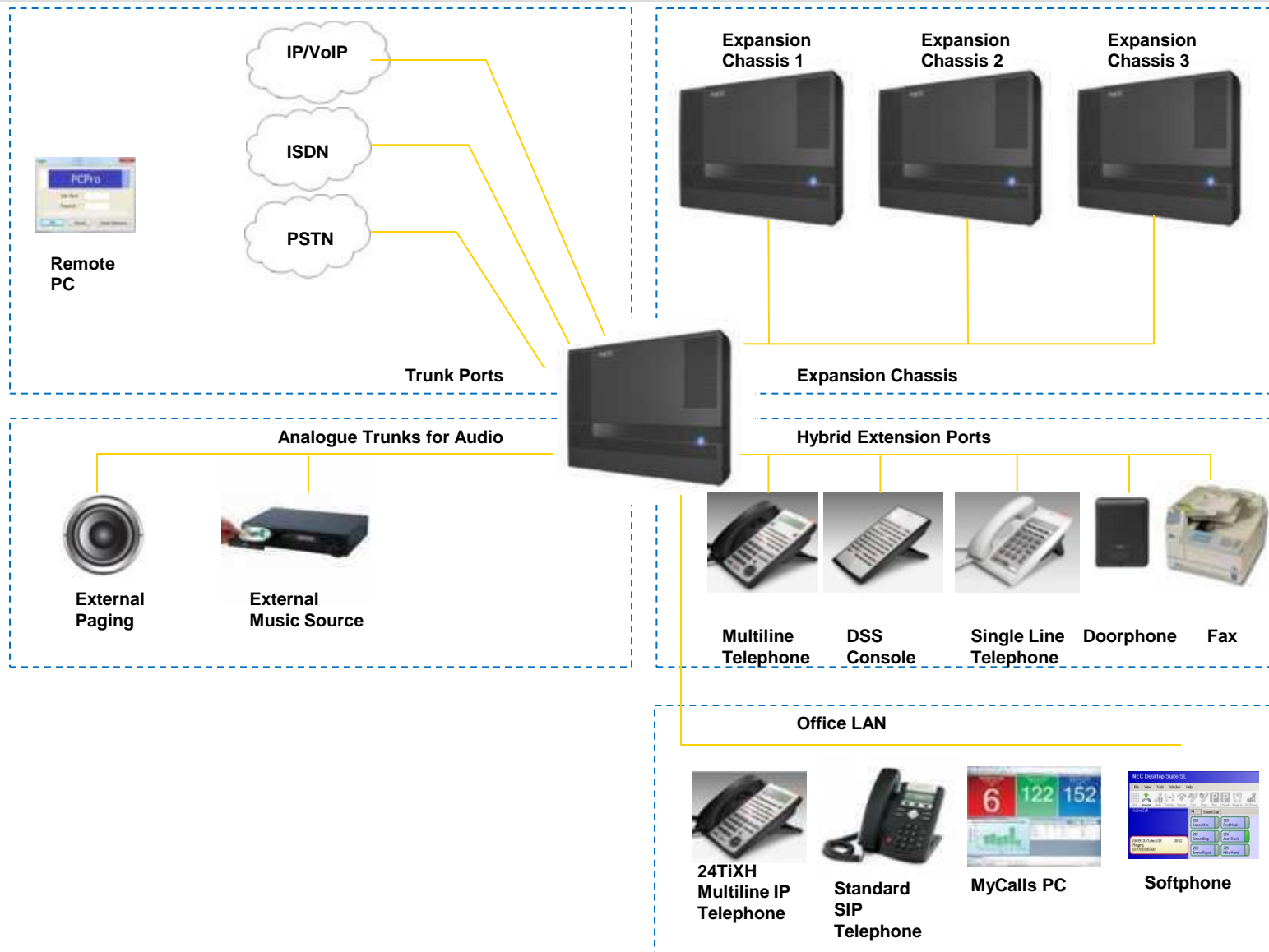


28 APR MON 8:45AM			
200	EXT200		
List	Dir	ICM	Prog

Platform Portfolio Overview



What does SL1000 support ?



Features at your fingertips



Terminals

TDM

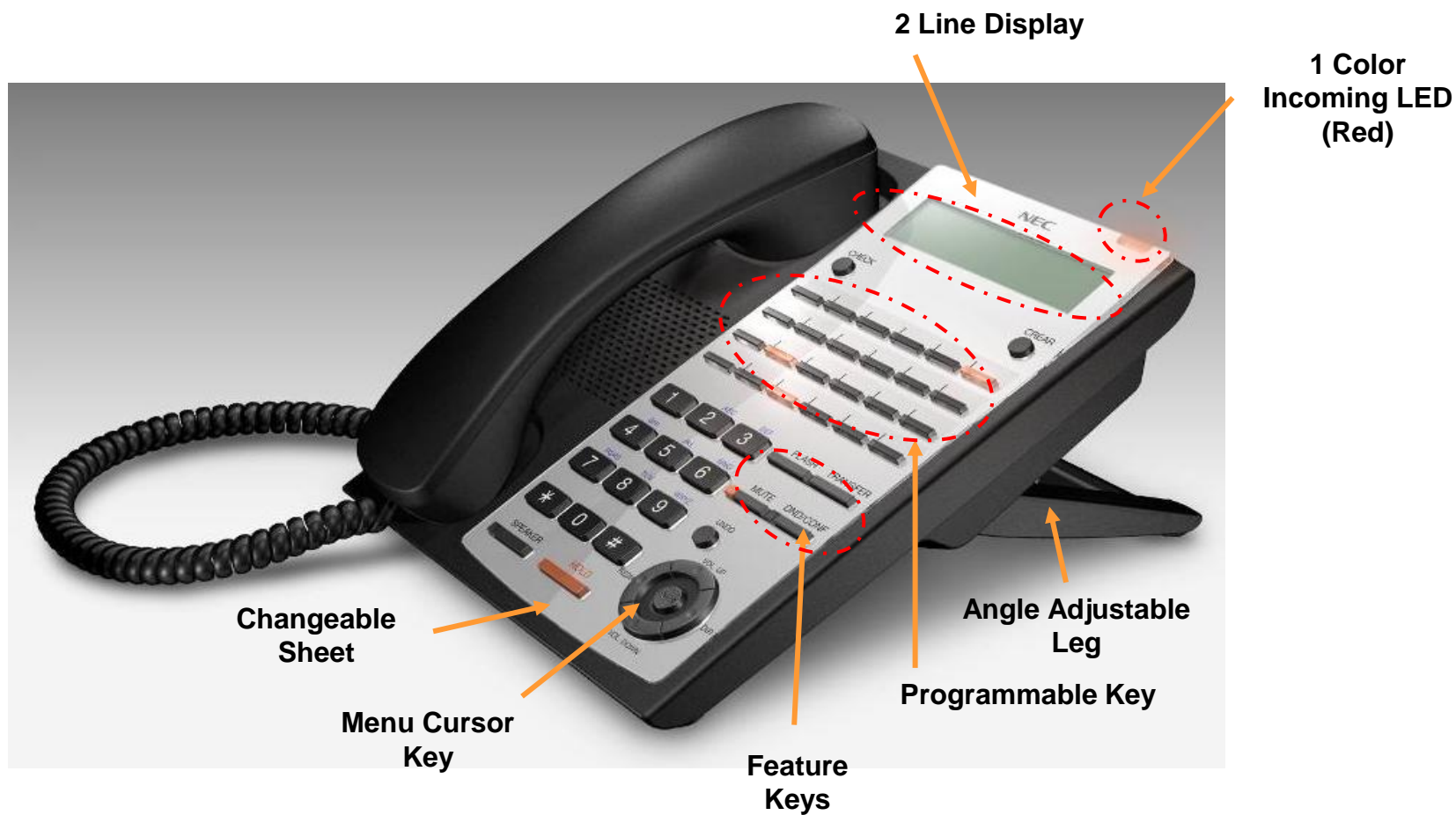
- 4W hybrid System Phones
- 2W SLT Analoge ports

IP

- MLT System Phones
 - Standard SIP phones
-
- See presentation “Terminals”



Terminal Features



SL1000 Platform - Capacity



Main chassis – includes:

- 4 Analog Trunks
- 8 Hybrid Extensions
- 3 Expansion slots

Main chassis – Up to:

- 16 Analog or 12 BRI Trunks
- 32 Hybrid Extensions
- 16 IP Terminals + 16 IP Trunks



Expansion chassis – includes:

- 4 Analog Trunks
- 8 Hybrid Extensions
- 3 Expansion slots

Expansion chassis – Up to:

- 16 Analog or 12 BRI Trunks
- 32 Hybrid Extensions



Maximum Capacity:

- Main Chassis +
 - 3 Expansion Chassis
 - 48 Analog Trunks
 - 36 BRI Trunks
 - 16 IP Trunks
 - 128 Hybrid Extensions
 - 16 IP Terminals

SL1000 Platform - Capacity

Number of chassis			Main chassis	Expansion chassis 1	Expansion chassis 2	Expansion chassis 3	Remarks	
Total Ports			66	132	198	230		
	Trunk Port	Max	32	48	64	64		
		Analog	16	32	48	48		
		ISDN BRI	12	24	36	36		
		IP Trunk (SIP/H.323)	16					VOIPDB & MEMDB is required
		External Paging	1	2	3	3	Use Analog Trunk ports	
		External MOH	1					Use Analog Trunk port
		BGM	1					Use Analog Trunk port
	Extension Ports	Max	32	64	96	128		
		Multi-Line Telephone	24	48	72	96		
		Single Line Telephone	32	64	96	128		
		IP Terminal (SIP-MLT/Std.)	16					VOIPDB & MEMDB is required
		DSS Console	3	6	9	12	Connect to Hybrid Extension ports	
		Door phone	2	4	6	6	Connect to Hybrid Extension ports	
Virtual Extension Port			50					
Power Failure Circuit			4	8	12	12	1 circuit per 408M/408E	
Door Relay			2	4	6	6	Located on 408M of each chassis	
Ethernet Port			1					Located on CPU
Built-In Answering Machine Channel			1					Built in to CPU
VRS & Voicemail Channel			8 / 16					CPU : Max 8ch, CPU+MEMDB : Max 16ch
Analog Modem			1					Mounted on PZ-VM21

Applications: MyCalls

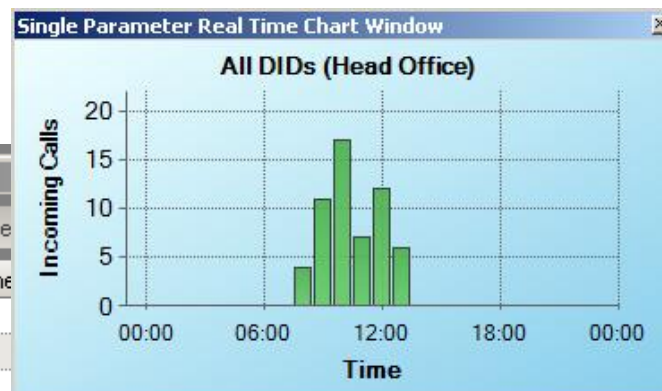
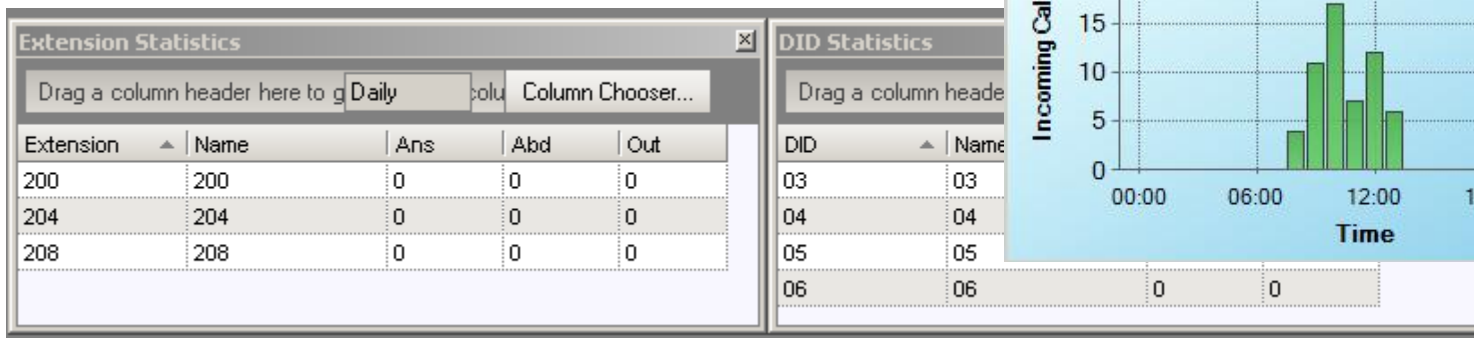


e.g. Statistics on calls handled or missed

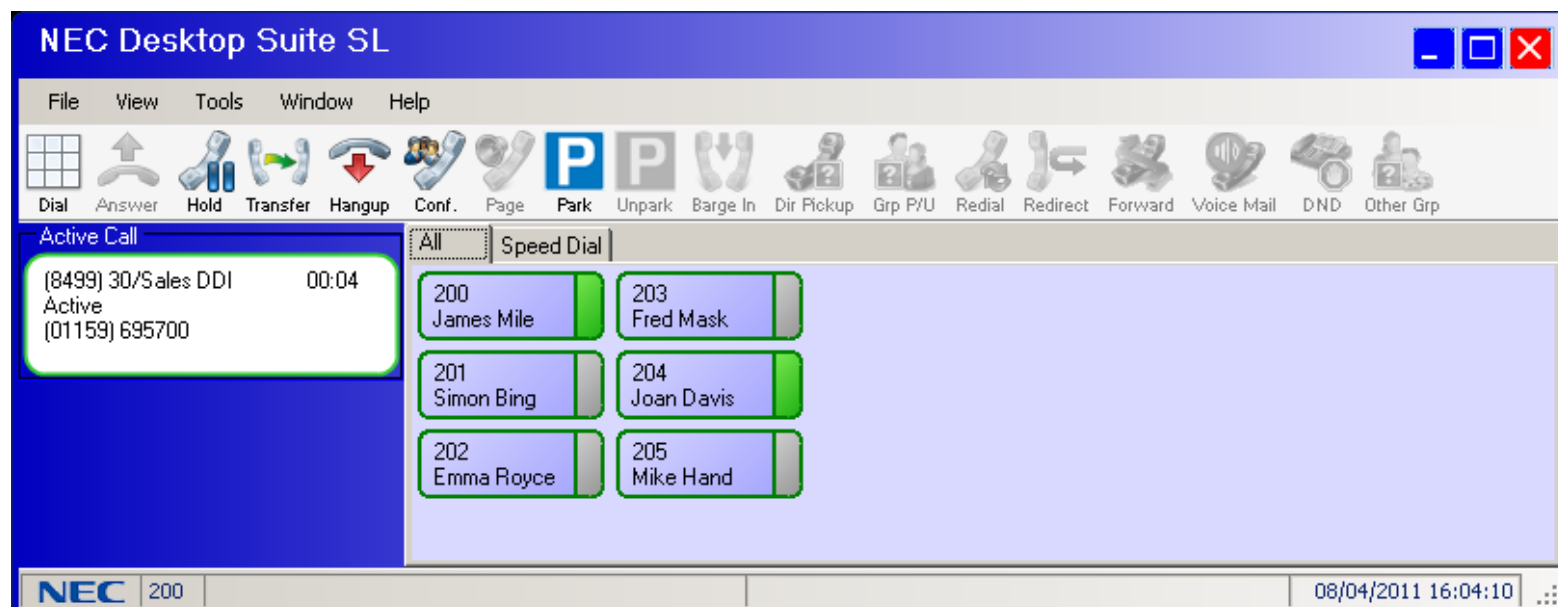
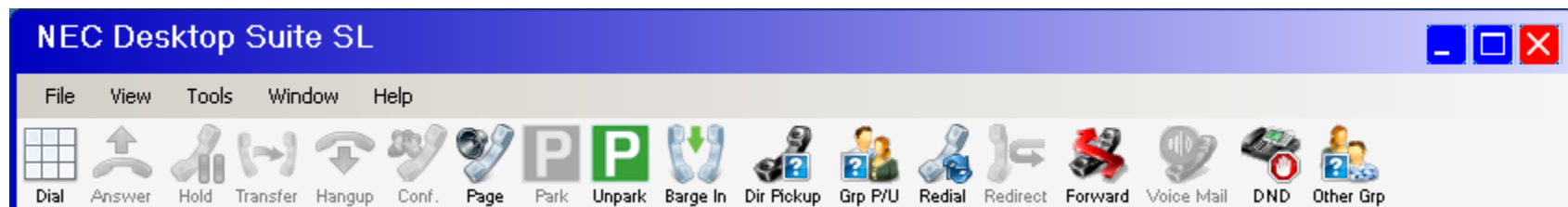
Extension Statistics

Drag a column header here to group by that column. Daily Column Chooser...

Extension	Name	Ans	Out	Int	GOS	Abd GOS
223	Carlos Clement	8	10	0	50.00	50.00
224	Todd Hildreth	14	7	0	100.00	100.00
225	Julie Smalls	10	10	0	100.00	100.00
226	Jeanne Gales	0	7	0	00.00	00.00
227	Danny Macy	6	3	0	100.00	100.00

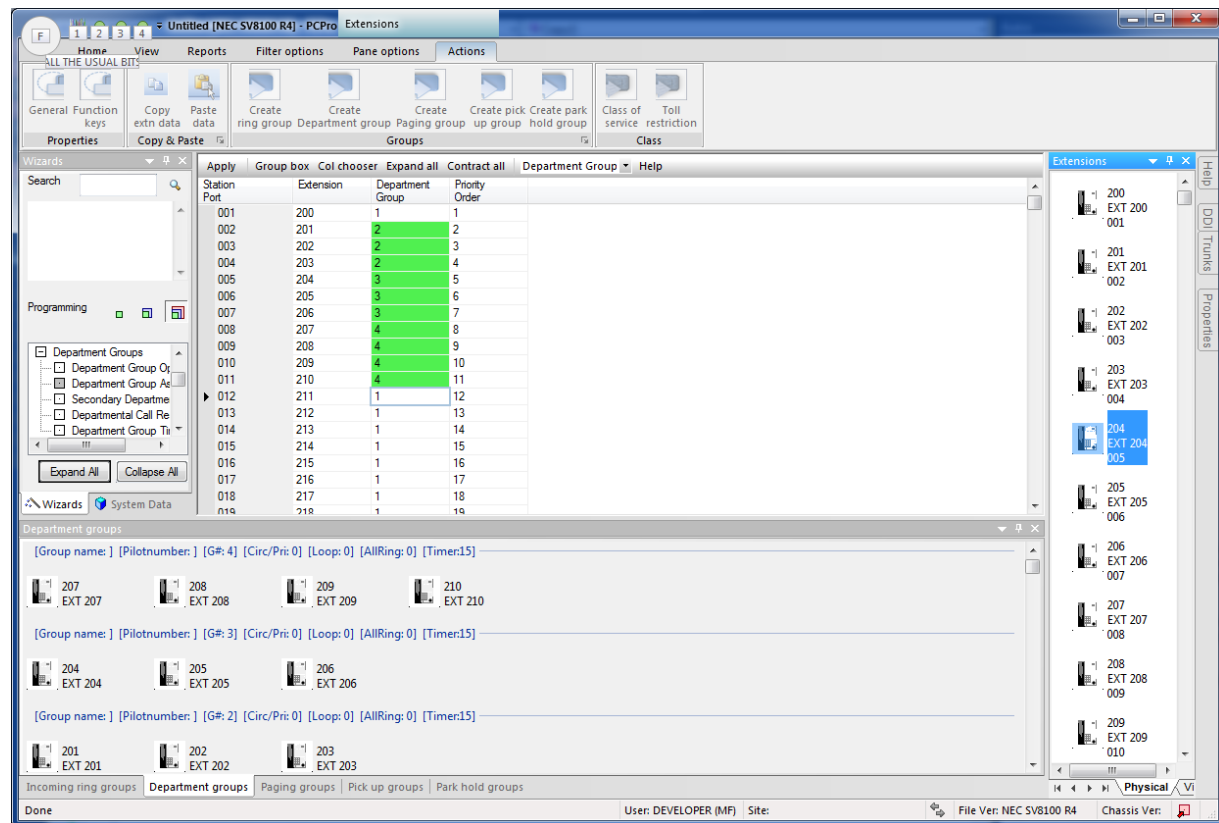


Applications: Desktop Suite Lite



PC Pro: Easy to Train and Install

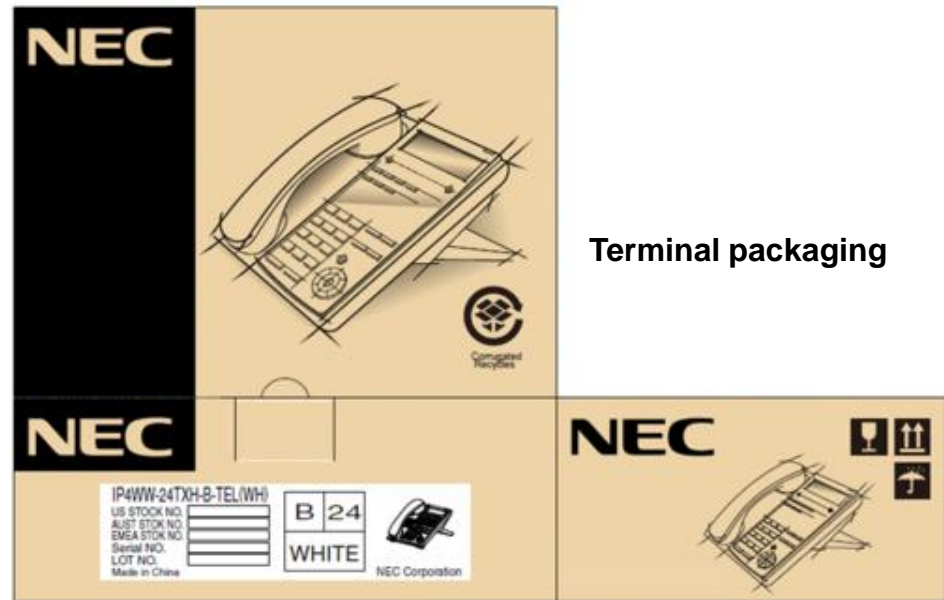
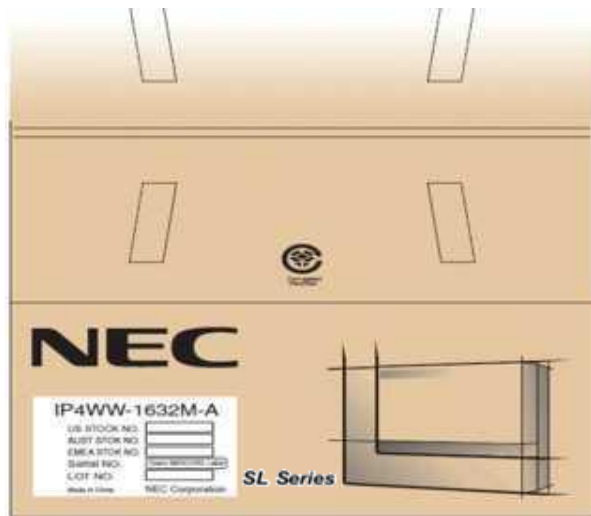
- Graphical Interface
- Wizzards (easy edit)
- Ribbon bar, Drag and drop etc...
- Remote Upgrade Via IP



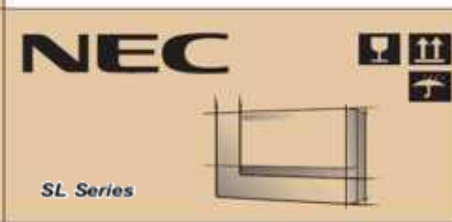
Packaging

Distinctive Packaging

- Increase awareness of NEC name
- More like a consumer product
- Eco friendly materials



Terminal packaging



Main and Expansion
Chassis packaging

Empowered by Innovation

NEC