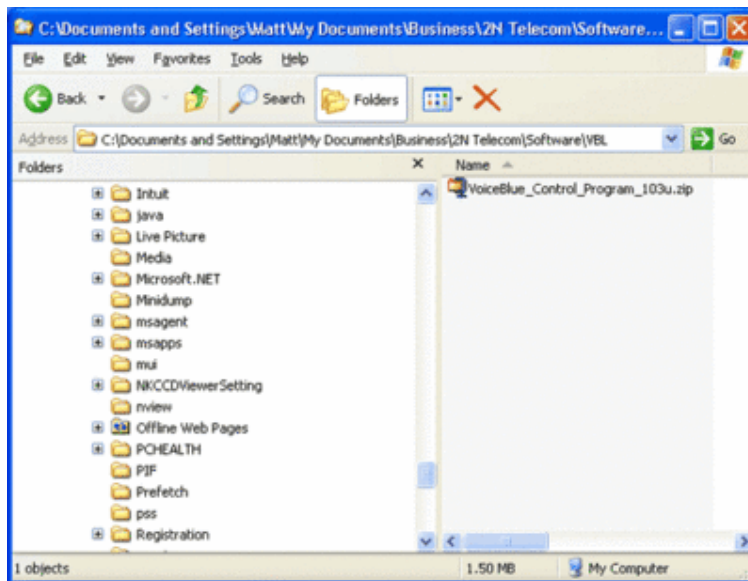


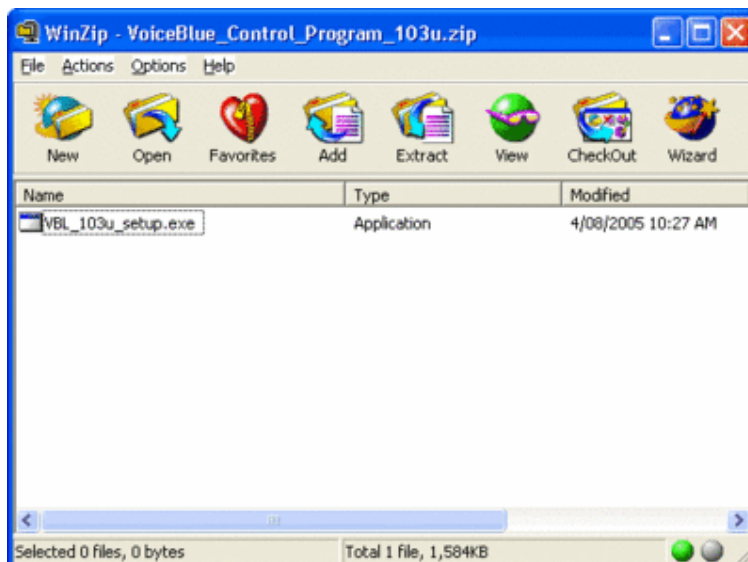
## 2N VoiceBlue Lite – Quick guide

This guide will show you how to quickly setup the [2N VoiceBlue Lite GSM VoIP Gateway](#) (find the basic information about [2N VoiceBlue Lite here](#)) with a basic configuration that will suffice for most installations. It will not show you how to setup your particular SIP proxy/IP PBX. Please consult your SIP proxy manual for details of configuring a SIP trunk on your product.

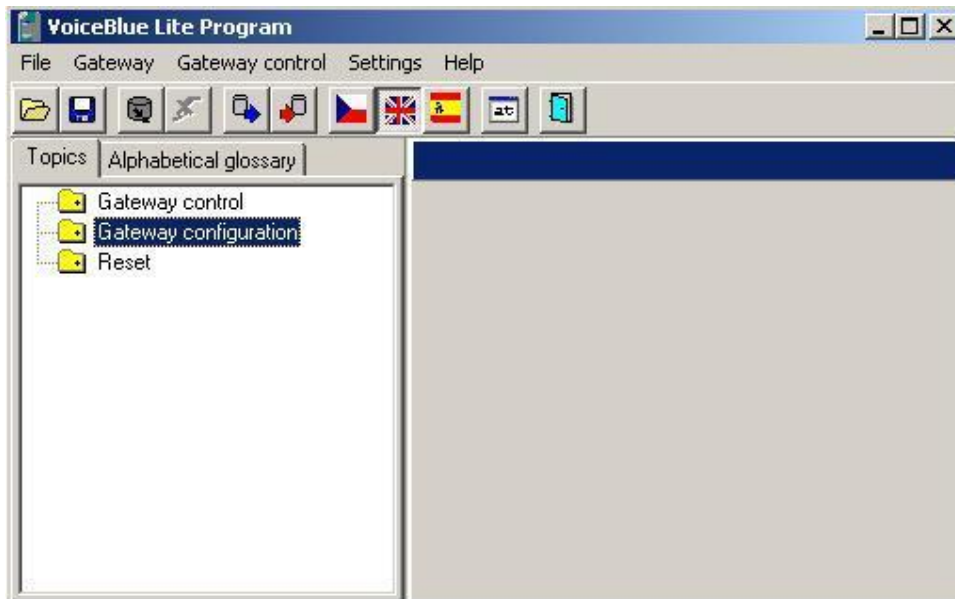
Firstly, make sure you have the latest 2N VoiceBlue Control Program by downloading it from: [http://www.2n.cz/products/gsm\\_gateways/voip/voiceblue.html](http://www.2n.cz/products/gsm_gateways/voip/voiceblue.html)



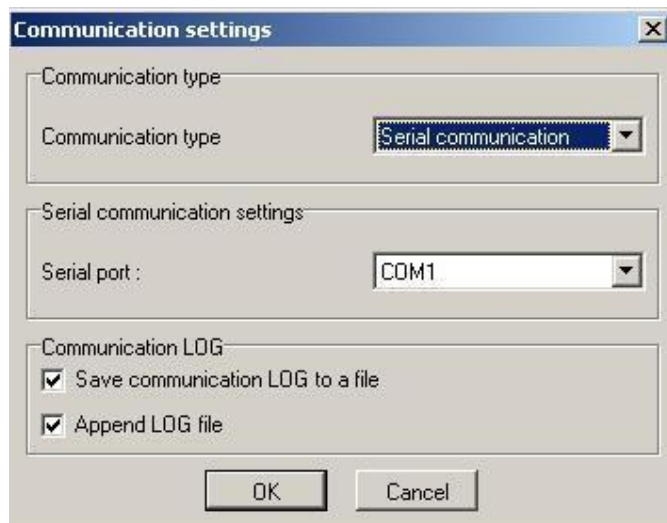
Double click on the downloaded zip file and extract to a folder on your PC's disc drive.



Now double-click on the extracted setup.exe to install the program. Follow the installation wizard, selecting the default entries to install the Control Program. Once installed the Control Program window will appear.

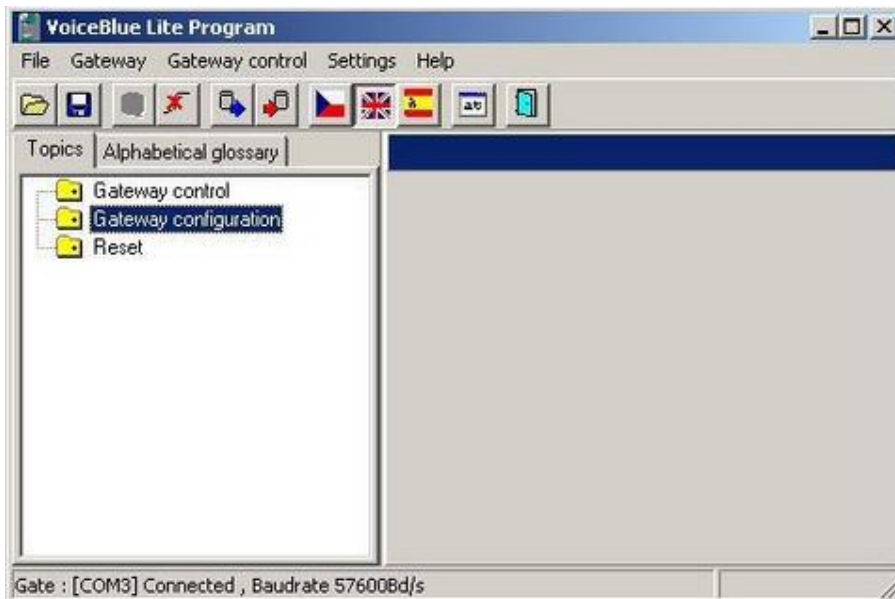


**Connect the supplied serial (or USB) cable connected between your gateway and your PC COM1 port (USB port - in case of USB connection is necessary to install supplied USB driver) and click the Settings menu item and select Communication settings.** Make sure you have at least one SIM card with some credit on it in one of the SIM drawers. When the SIM is inserted correctly and registered to its network the LED corresponding to the installed SIM will be off. SIM's can be inserted with the gateway powered on but you may need to power reset the gateway for it to read the SIM correctly. Be sure to insert the SIM holder into the drawer the correct way up. You should not have to force it.

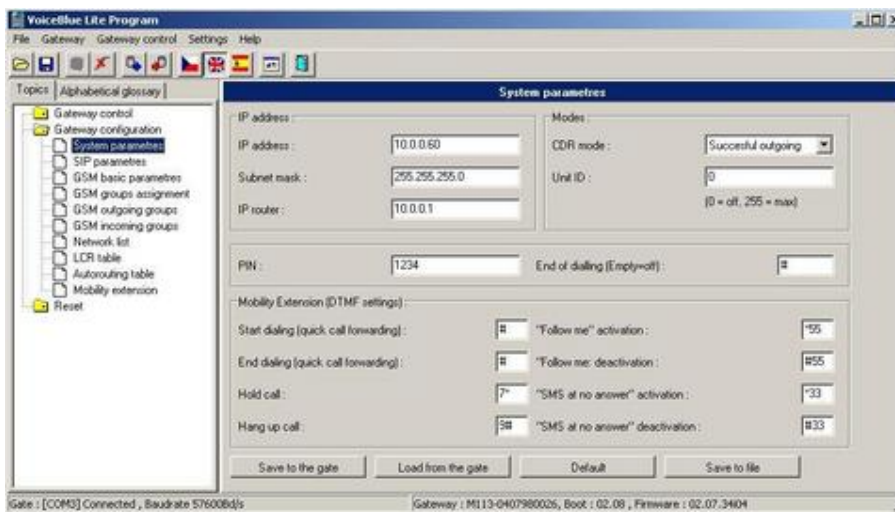


When the **Communication settings window** appears, click the Get speed button. The gateway will then read the speed of your com port in order for it to make a connection. Then click Connect and OK.

You should now have the following window and can see from the status display that you are connected to the gateway.



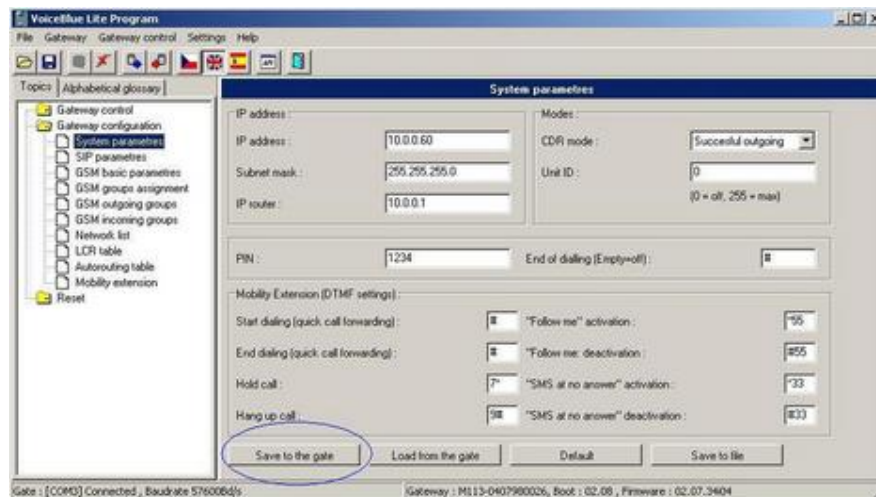
Click on Gateway configuration and then double-click on the System Parameters option.



**On the following window enter the IP details for this gateway, including the router IP (default gateway) if this gateway and its SIP proxy are on different networks.** The IP address you configure here will be the address that your SIP proxy is configured to use when setting up the SIP trunk to the gateway. Finish by clicking on Save to gate. When asked “would you like to save set parameters to disc”, select “yes” if you want your settings saved to your parameters file. This is good practice if you want to store your gateways settings offline for recovery, or you are managing multiple gateways through the Control Program, etc.

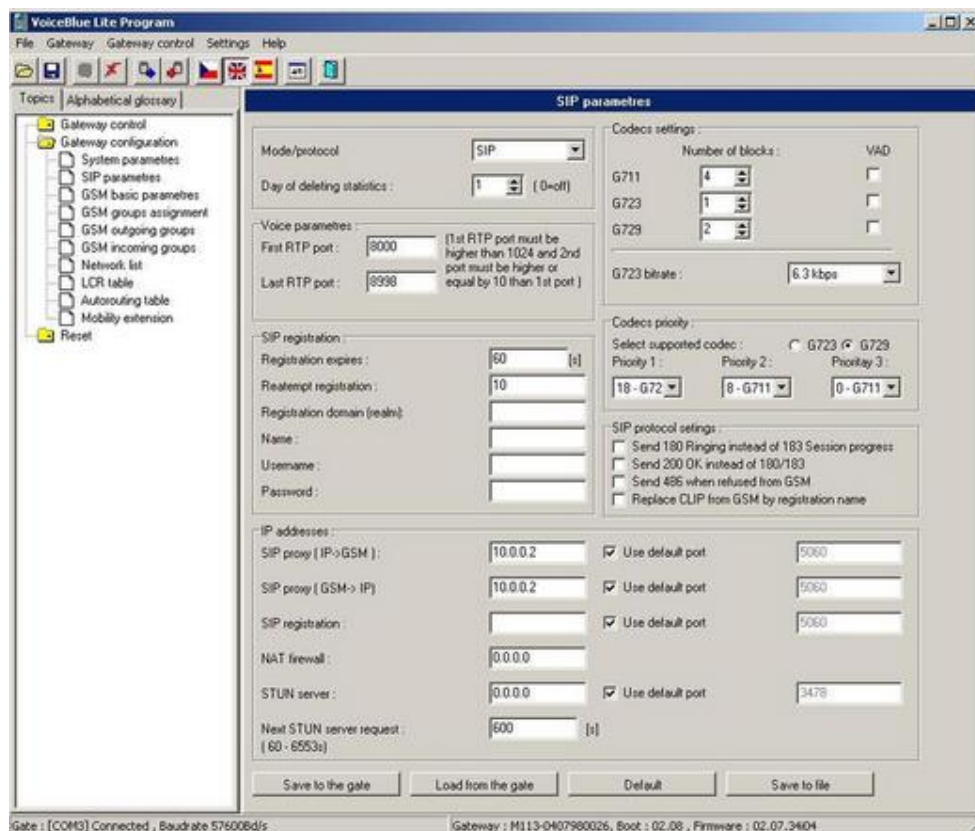
**Note:** Whenever you make any configuration changes on the gateway always save them to

the gate and optionally save them to disc when asked if you would like to keep configuration information stored off line.



Next we will setup SIP information and other **VoIP parameters** such as required CODEC's, etc.

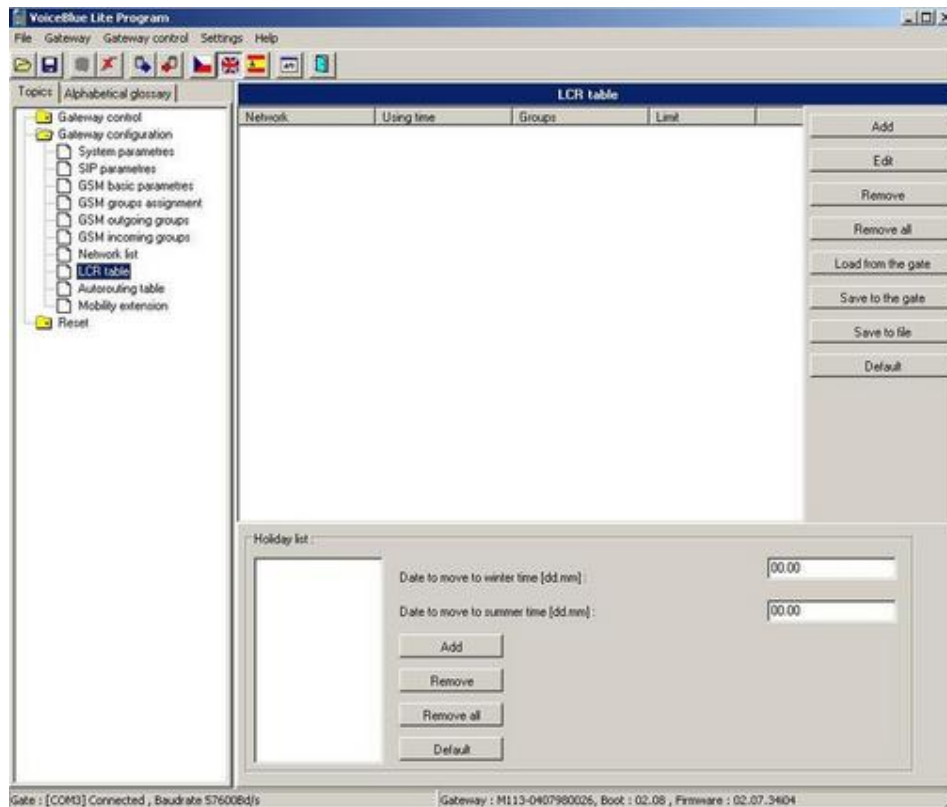
Double click the SIP parameters option.



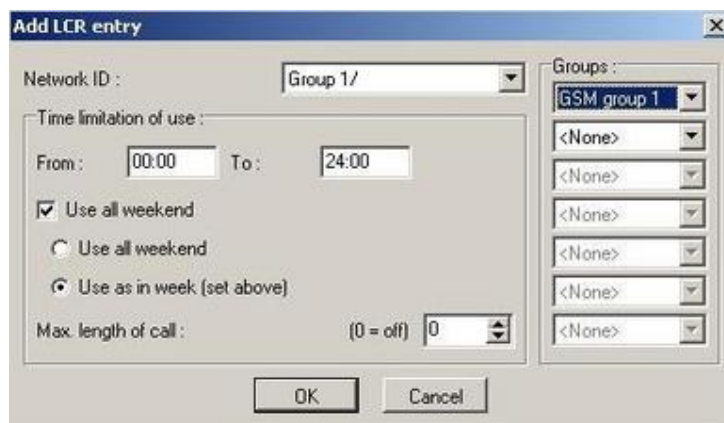
**In the IP address section enter the IP address of your SIP proxy server.** This will usually be the same address in GSM>IP and IP>GSM fields. If you are using non-standard ports for

SIP operation uncheck the Use default port and enter your required port number. Remember to click on Save to gate to load your settings to the gateway and then click Close. Save your settings to disc if required. SIP registration username and password are not required unless you specifically need extra security on this trunk.

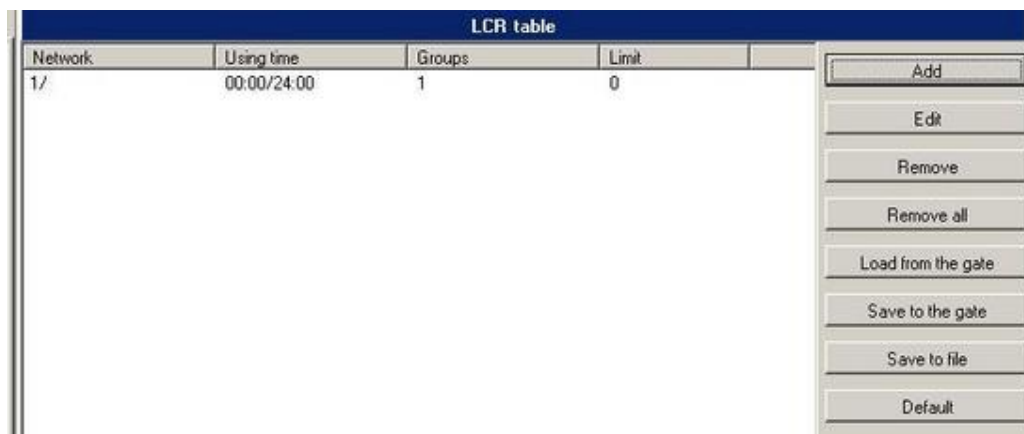
Lastly, **setup the LCR table** to tell the gateway what to do when it receives calls by double-clicking the LCR table option in the gateway PROG window.



Click on Add to add to add an LCR entry. On the following dialogue window, accept the default options and then click O.K.



The default entry is sufficient for most cases. Click on Save to gate to save the LCR entry to the gateway. Save to disc if required.



The screenshot shows a window titled "LCR table" with a table and a sidebar of buttons. The table has four columns: "Network", "Using time", "Groups", and "Limit". The first row contains the values "1/", "00:00/24:00", "1", and "0". The sidebar on the right contains the following buttons: "Add", "Edit", "Remove", "Remove all", "Load from the gate", "Save to the gate", "Save to file", and "Default".

Network	Using time	Groups	Limit
1/	00:00/24:00	1	0

That's it for the gateway configuration. **Once the SIP proxy is configured route to calls with a certain prefix (e.g. 04 for Australian mobiles) to a SIP trunk configured with the gateway IP settings, then everything is ready for you to start routing calls via the [2N VoiceBlue](#) rather than the PSTN.**

Please read the User Manual for an understanding of how to configure more complex setups.